

## PASARALE

 SLEEPS 10



### AT A GLANCE

- 2 double bedrooms with en-suite bathroom
- 2 twin rooms with en-suite bathrooms
- 1 twin room with en-suite shower room
- SKY TV & DVD + WiFi
- Ipod docking station
- Nespresso machine
- Hairdryer, bathrobes & slippers in each bedroom
- Toiletries provided
- Log fire
- Sun terrace
- Ski locker and heated boot drier
- Garage parking for 2 cars

## *Stylish interior and a great location*

Take advantage of Chalet Pasarale's great location, within easy walking distance of the piste, ski school meeting points and main lift station at La Chaudanne. Within minutes you are able to stroll into Meribel centre and enjoy the village atmosphere and all it has to offer.

The stylish and contemporary decor ensures absolute comfort and provides the perfect place to relax after a busy day outdoors in the Three Valleys. With a spacious sitting room, ample comfortable sofas and large fire place in the heart of the room, you can sit back and enjoy pre dinner drinks and canapes in front of the roaring log fire. The open plan kitchen and dining area leads off the sitting room. With 5 very comfortable ensuite bedrooms this chalet is ideal for families or a group of friends.

Chalet Pasarale has recently under gone a full interior renovation, ensuring that this delightful chalet has been further enhanced with bespoke soft furnishings, beautiful bedroom decor and new bathrooms. Guests will be extremely comfortable and enjoy the charming interior that this chalet has to offer.

## CHALET INFORMATION

### Our Menus

Your chef & host will ensure you enjoy delicious meals during your stay and will serve you with:

- Cooked & continental breakfast each day, except on their 1 full day off taken on a Wednesday and a Friday morning which is a staff half day off, when they will leave a self-service continental breakfast.
- Afternoon tea with home baked cake or cookies will be available each day.
- On 6 nights you can look forward to pre-dinner canapés served with sparkling wine, beer & soft drinks, followed by a 4 course dinner served with selected wines and finished with fresh coffee and chocolates.
- Special dietary requirements and early children's supper can be catered for, please notify us in advance.

### Other Services

Daily Housekeeping, except on Wednesday and Friday. Quality bed linen, large bath towels, bathrobes, hairdryers & toiletries are provided. We are happy to recommend Meribel Nanny Services if you require private child care. If you would like massages or beauty treatments your chalet host can recommend various therapists who will visit the chalet. Remember to book your lift passes, equipment hire and ski school prior to arrival. See [www.skicuisine.co.uk](http://www.skicuisine.co.uk) for more information.

## ON THE SLOPES

### Lift Passes

We strongly recommend you pre book lift passes and equipment hire and benefit from free delivery to your chalet. You can pre book online at [skipass.skicuisine.co.uk](http://skipass.skicuisine.co.uk) and passes will be delivered to your chalet prior to your arrival.

### Ski/Board Schools

[www.parallel-lines.com](http://www.parallel-lines.com)

Tel: UK 0844 8112779

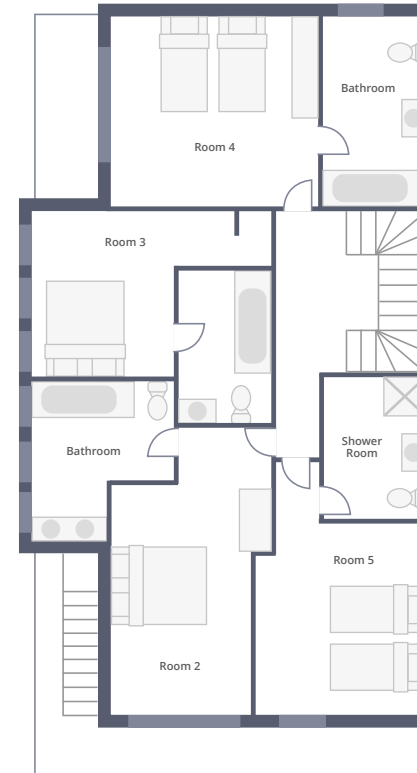
### Ski/Board Hire

Ski Cuisine clients can benefit from reduced prices with the following providers when you pre book. [www.slidecandy.com](http://www.slidecandy.com)  
[www.meribel-ski-service.com](http://www.meribel-ski-service.com)

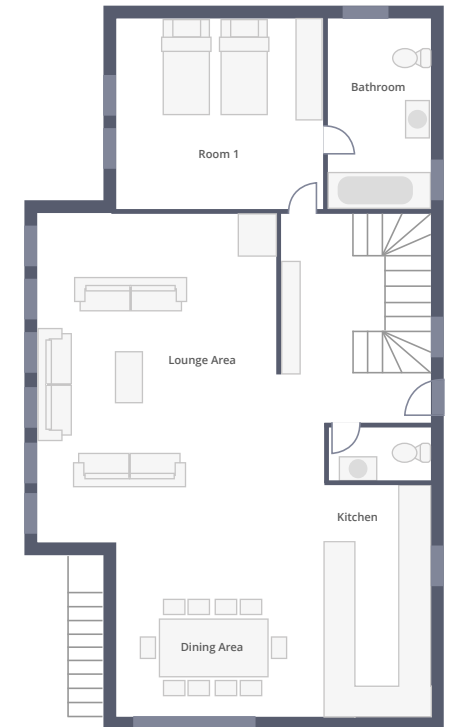
### Travel Information

[www.skicuisine.co.uk](http://www.skicuisine.co.uk) has links to airlines, train services and transport companies. Geneva, Chambéry & Lyon airports are served by the major airlines, contact us for more advice about your transfers to Meribel.

### GROUND FLOOR



### FIRST FLOOR





## MÉRIBEL AT A GLANCE

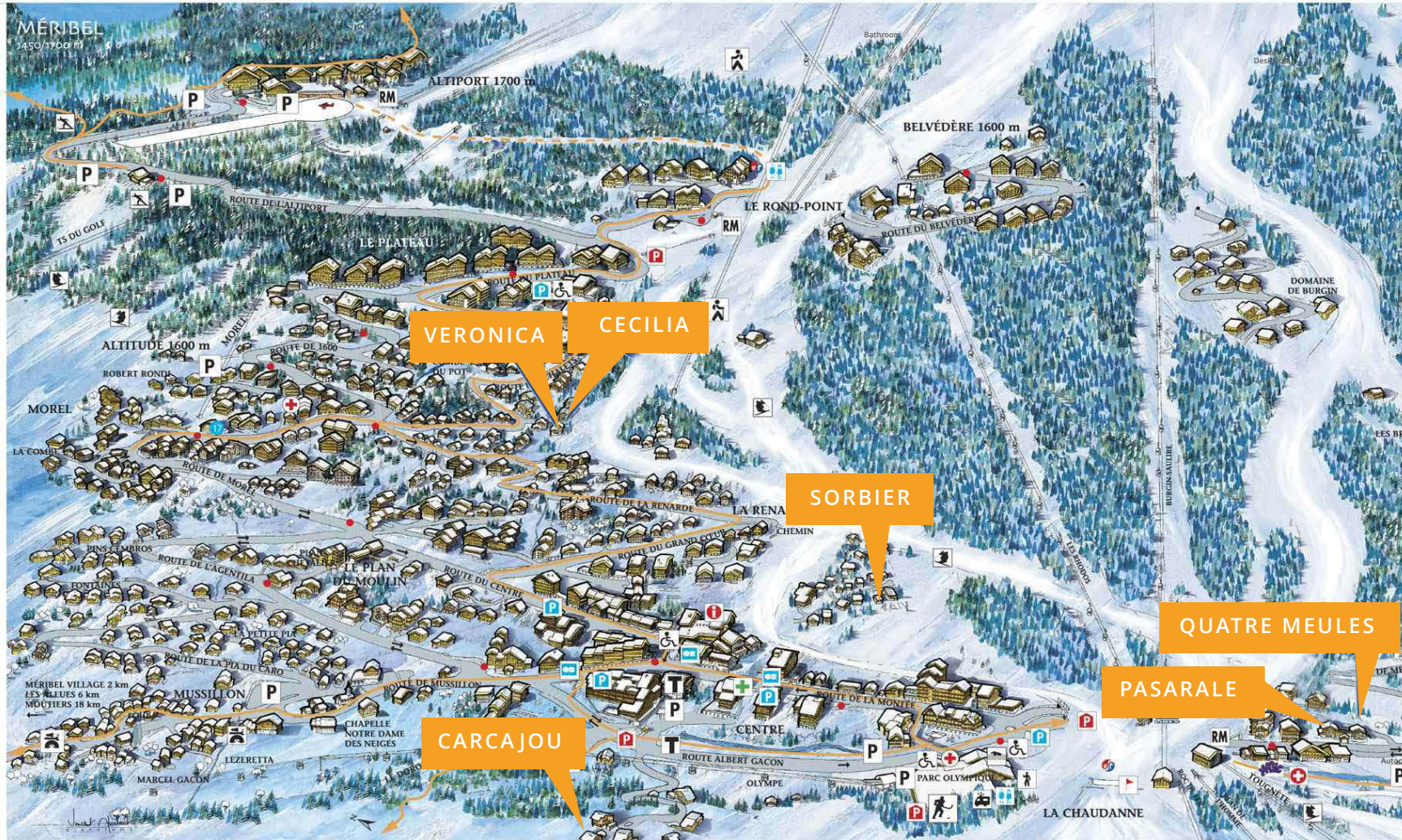
### Méribel at a glance

La Chaudanne is the skiing center of Méribel. From here no less than five lifts take you on your way to the slopes. Locker hire is available at La Chaudanne allowing you to leave your equipment secure when you are ready to leave the slopes.

Méribel center is located next to La Chaudanne offering walking access to the shops, bars and restaurants in the resort. The local free shuttle bus stops at the ice-rink and throughout the resort.

#### KEY

- |  |   |  |                               |
|--|---|--|-------------------------------|
|  | Méribel Tourist Office, ESF, Carte Neige, SNGF, Coaches, Change, Post Office, Taxis, Reservation, Radio |  | Chemist                       |
|  | Indoors paying car park   |  | Rescue center                 |
|  | Outdoors free car park  |  | Gendarmerie station           |
|  | Pay and display outdoor parking   |  | Police station                |
|  | Taxis   |  | Kindergarten                  |
|  | Cash point (ATM)  |  | Parallel Lines meeting point  |
|  | Garage  |  | ESF meeting point             |
|  | Shuttle stop  |  | Magic in Motion meeting point |
|  | Doctor  |  | Handicapped access            |
|  |   |  | Skipass                       |
|  |   |  | Stadium                       |
|  |   |  | Pedestrian itinerary          |



**Ski Cuisine**  
A la carte chalets in Méribel