

## QUATRE MEULES

 SLEEPS 8



### AT A GLANCE

- 1 double bedroom with en-suite shower room
- 1 double bedroom with en-suite bath room
- 1 twin room with en-suite bathroom
- 1 twin/double room with en-suite shower room
- SKY TV + WiFi
- Ipod docking station
- Nespresso machine
- Hairdryer, bathrobes & slippers in each bedroom
- Toiletries provided
- Log fire + Sun terrace
- Ski locker and heated boot drier
- Garage parking for 2 cars



*Recently renovated with quick access to ski lifts & schools*

Guests staying at the newly renovated Chalet Quatre Meules can look forward to contemporary soft furnishings, brand new bathrooms and four stylish yet cosy bedrooms.

Situated in a great location, within easy walking distance of the main lift station and ski school meeting points at La Chaudanne, this is an ideal choice for families and beginners as access to the chalet is very easy. Meribel centre is just a short walk away offering plenty of choice when it comes to apres ski.

The open-plan sitting and dining room is light and spacious and has ample comfortable sofas, so is the perfect place to relax and enjoy pre dinner drinks and canapes in front of the roaring log fire. A separate TV room adds extra space for relaxation and is perfect for children to use as a play room. The terrace has lovely views towards the pistes and the Meribel valley.

Chalet Quatres Meules is located right next door to Chalet Pasarale, which is perfect if you are a larger group wishing to be close to one another during your holiday.

## CHALET INFORMATION

### Our Menus

Your chef & host will ensure you enjoy delicious meals during your stay and will serve you with:

- Cooked & continental breakfast each day, except on their 1 full day off taken on a Wednesday and a Friday morning which is a staff half day off, when they will leave a self-service continental breakfast.
- Afternoon tea with home baked cake or cookies will be available each day.
- On 6 nights you can look forward to pre-dinner canapés served with sparkling wine, beer & soft drinks, followed by a 4 course dinner served with selected wines and finished with fresh coffee and chocolates.
- Special dietary requirements and early children's supper can be catered for, please notify us in advance.

### Other Services

Daily Housekeeping, except on Wednesday and Friday. Quality bed linen, large bath towels, bathrobes, hairdryers & toiletries are provided. We are happy to recommend Meribel Nanny Services if you require private child care. If you would like massages or beauty treatments your chalet host can recommend various therapists who will visit the chalet. Remember to book your lift passes, equipment hire and ski school prior to arrival. See [www.skicuisine.co.uk](http://www.skicuisine.co.uk) for more information.

## ON THE SLOPES

### Lift Passes

We strongly recommend you pre book lift passes and equipment hire and benefit from free delivery to your chalet. You can pre book online at [skipass.skicuisine.co.uk](http://skipass.skicuisine.co.uk) and passes will be delivered to your chalet prior to your arrival.

### Ski/Board Schools

[www.parallel-lines.com](http://www.parallel-lines.com)

Tel: UK 0844 8112779

### Ski/Board Hire

Ski Cuisine clients can benefit from reduced prices with the following providers when you pre book. [www.slidecandy.com](http://www.slidecandy.com)  
[www.meribel-ski-service.com](http://www.meribel-ski-service.com)

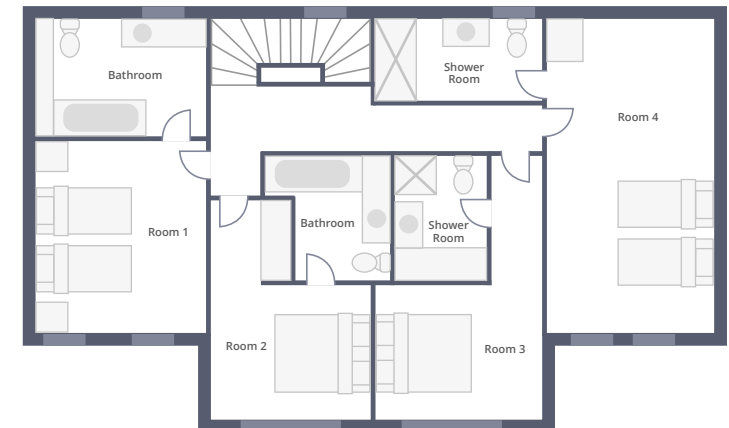
### Travel Information

[www.skicuisine.co.uk](http://www.skicuisine.co.uk) has links to airlines, train services and transport companies. Geneva, Chambéry & Lyon airports are served by the major airlines, contact us for more advice about your transfers to Meribel.

### GROUND FLOOR



### FIRST FLOOR



# MÉRIBEL AT A GLANCE

## Méribel at a glance

La Chaudanne is the skiing center of Méribel. From here no less than five lifts take you on your way to the slopes. Locker hire is available at La Chaudanne allowing you to leave your equipment secure when you are ready to leave the slopes.

Méribel center is located next to La Chaudanne offering walking access to the shops, bars and restaurants in the resort. The local free shuttle bus stops at the ice-rink and throughout the resort.

### KEY

- |  |   |  |                               |
|--|---|--|-------------------------------|
|  | Méribel Tourist Office, ESF, Carte Neige, SNGF, Coaches, Change, Post Office, Taxis, Reservation, Radio |  | Chemist                       |
|  | Indoors paying car park   |  | Rescue center                 |
|  | Outdoors free car park  |  | Gendarmerie station           |
|  | Pay and display outdoor parking   |  | Police station                |
|  | Taxis   |  | Kindergarten                  |
|  | Cash point (ATM)  |  | Parallel Lines meeting point  |
|  | Garage  |  | ESF meeting point             |
|  | Shuttle stop  |  | Magic in Motion meeting point |
|  | Doctor  |  | Handicapped access            |
|  |   |  | Skipass                       |
|  |   |  | Stadium                       |
|  |   |  | Pedestrian itinerary          |

