

SORBIER

 SLEEPS 10



AT A GLANCE

- 2 double bedrooms with en-suite shower room
- 2 twin/double bedrooms with en-suite bathrooms (1 with 3rd bed)
- 1 twin room with en-suite shower room
- Satellite TV & DVD + WiFi
- Ipod docking station
- Nespresso machine
- Hairdryer, bathrobes & slippers in each bedroom
- Toiletries provided
- Log fire
- Hot tub + Large sun terrace
- Ski locker and heated boot drier



Large terrace and hot tub with fantastic views

If you are looking for a traditional chalet close to the slopes and Meribel centre then Chalet Sorbier is ideally located. Situated on a peaceful pathway amongst the pine trees you will be able to enjoy a tranquil location for your chalet holiday but have great access to the village which is just across the piste.

You can relax in front of the huge open fire place and enjoy the comfort of your cosy yet stylish sitting room. After a day on the slopes soothe tired legs in the steaming hot tub whilst sipping a well earned aperitif! In addition Chalet Sorbier has a large terrace and is the perfect place to take in the wonderful views across the Meribel valley.

We will assist you with your luggage when you arrive and depart, as access for vehicles is restricted in the winter due to its location across the piste. Public parking is available a short distance away, in Meribel centre.

The slopes are easily accessible from the chalet by walking or skiing along a short path way which joins the main piste at Meribel centre.

CHALET INFORMATION

Our Menus

Our chalet staff will ensure you enjoy delicious meals during your stay and they will serve you with:

- Cooked & continental breakfast each day, except on their 1 full day off taken on a Wednesday when they will leave a self-service continental breakfast.
- Afternoon tea with home baked cake or cookies will be available each day.
- On 6 nights you can look forward to pre-dinner canapés served with sparkling wine, beer & soft drinks, followed by a 4 course dinner served with selected wines & finished with fresh coffee & chocolates.
- Special dietary requirements & early children's supper at 6pm can be catered for, please notify us in advance.
- Please note that whilst we try to be flexible and accommodate reasonable dietary requirements that it is difficult for our chefs to provide many different meal requests.

Other Services

Daily Housekeeping, except on Wednesday. Quality bed linen, large bath towels, bathrobes, hairdryers & toiletries are provided. We are happy to recommend Meribel Nanny Services if you require private child care. If you would like massages or beauty treatments your chalet host can recommend various therapists who will visit the chalet. Remember to book your lift passes, equipment hire & ski school prior to arrival. For more information - www.skicuisine.co.uk We suggest you book your airport transfers well in advance. For recommendations - www.skicuisine.co.uk/meribel-ski-resort/travel-transfers/

ON THE SLOPES

Lift Passes

We strongly recommend you pre book lift passes and equipment hire and benefit from free delivery to your chalet. You can pre book online at skipass.skicuisine.co.uk and passes will be delivered to your chalet prior to your arrival.

Ski/Board Schools

www.parallel-lines.com
Tel: UK 0844 8112779

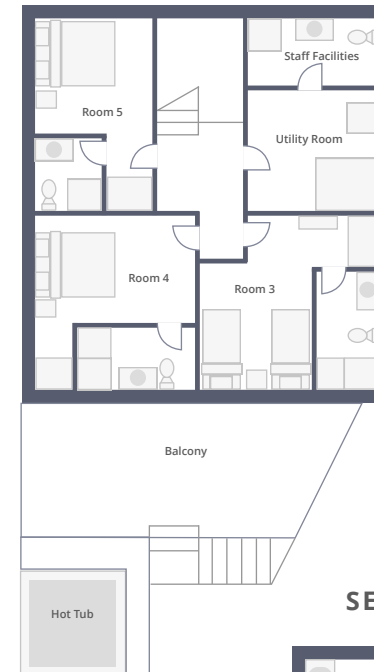
Ski/Board Hire

Ski Cuisine clients can benefit from reduced prices with the following providers when you pre book. www.slidecandy.com
www.meribel-ski-service.com

Travel Information

www.skicuisine.co.uk has links to airlines, train services and transport companies. Geneva, Chambéry & Lyon airports are served by the major airlines, contact us for more advice about your transfers to Meribel.

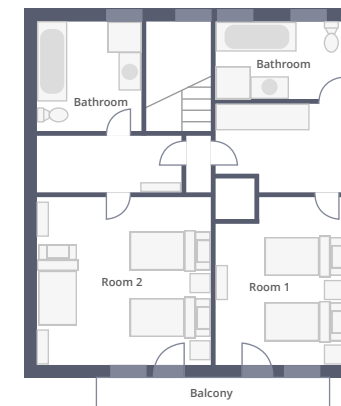
GROUND FLOOR



FIRST FLOOR



SECOND FLOOR



MÉRIBEL AT A GLANCE

Méribel at a glance

La Chaudanne is the skiing centre of Méribel. From here no less than five lifts take you on your way to the slopes. Locker hire is available at La Chaudanne allowing you to leave your equipment secure when you are ready to leave the slopes.

Méribel centre is located next to La Chaudanne offering walking access to the shops, bars and restaurants in the resort. The local free shuttle bus stops at the ice-rink and throughout the resort.

KEY

- Méribel Tourist Office, ESF, Carte Neige, SNCF, Coaches, Change, Post Office, Taxis, Reservation, Radio
- Indoors paying car park
- Outdoors free car park
- Pay and display outdoor parking
- Taxis
- Cash point (ATM)
- Garage
- Shuttle stop
- Doctor
- Chemist
- Rescue centre
- Gendarmerie station
- Police station
- Kindergarten
- Parallel Lines meeting point
- E.S.F. meeting point
- Magic in Motion meeting point
- Handicapped access
- Skipass
- Slalom Stadium
- Pedestrian itinerary

Ski Cuisine
A la carte chalets in Meribel

