

CECILIA

 SLEEPS 10



AT A GLANCE

- 1 double bedroom with en-suite bathroom
- 3 twin rooms with en-suite bathrooms
- 1 twin room with en-suite shower room
- Satellite TV & DVD
- WiFi
- Ipod docking station
- Nespresso machine
- Hairdryer and bathrobes in each bedroom
- Toiletries provided
- Log fire
- Large sun terrace
- Ski locker and heated boot drier



Be first on the slopes from your ski in, ski out location

For those seeking a traditional chalet close to the slopes, Chalet Cecilia is the perfect choice. Being located on the edge of the Doron piste, you can ski straight from the ski locker door! This enables you to access the superb lift system quickly and make the most of your day. Chalet Cecilia is situated at an altitude of 1600 metres and from the large sun terrace you can relax and enjoy the wonderful views across the Meribel valley.

The cosy sitting room with its open stone fireplace is the perfect place to enjoy pre dinner drinks and canapes and is full of alpine features with distinct slate floors and wooden beams. With 5 en-suite bedrooms the chalet is perfect for a group of freinds or families to share and offers comfortable accommodation.

With various shops, restaurants & bars close by and the centre of Meribel just a 15 minute walk or short bus ride away you will be spoilt for choice when it comes to après-ski.

Chalet Veronica is located right next door, ideal if you are a larger group wishing to be located close to one another during your group or family skiing holiday.

CHALET INFORMATION

Our Menus

Your chef & host will ensure you enjoy delicious meals during your stay and will serve you with:

- Cooked & continental breakfast each day, except on their 1 full day off taken on a Wednesday and a Friday morning which is a staff half day off, when they will leave a self-service continental breakfast.
- Afternoon tea with home baked cake or cookies will be available each day.
- On 6 nights you can look forward to pre-dinner canapés served with sparkling wine, beer & soft drinks, followed by a 4 course dinner served with selected wines and finished with fresh coffee and chocolates.
- Special dietary requirements and early children's supper can be catered for, please notify us in advance.

Other Services

Daily Housekeeping, except on Wednesday and Friday. Quality bed linen, large bath towels, bathrobes, hairdryers & toiletries are provided. We are happy to recommend Meribel Nanny Services if you require private child care. If you would like massages or beauty treatments your chalet host can recommend various therapists who will visit the chalet. Remember to book your lift passes, equipment hire and ski school prior to arrival. See www.skicuisine.co.uk for more information.

ON THE SLOPES

Lift Passes

We strongly recommend you pre book lift passes and equipment hire and benefit from free delivery to your chalet. You can pre book online at skipass.skicuisine.co.uk and passes will be delivered to your chalet prior to your arrival.

Ski/Board Schools

www.parallel-lines.com

Tel: UK 0844 8112779

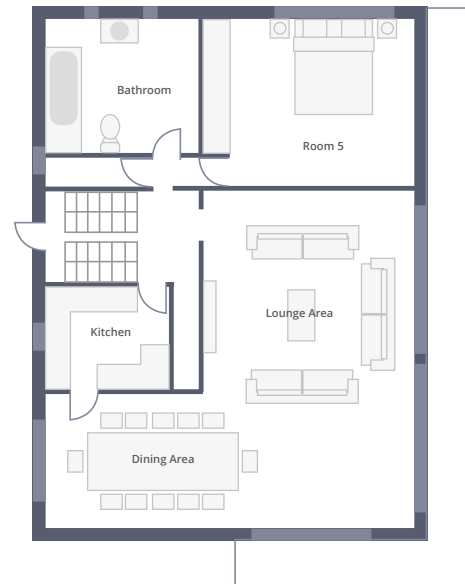
Ski/Board Hire

Ski Cuisine clients can benefit from reduced prices with the following providers when you pre book. www.slidecandy.com
www.meribel-ski-service.com

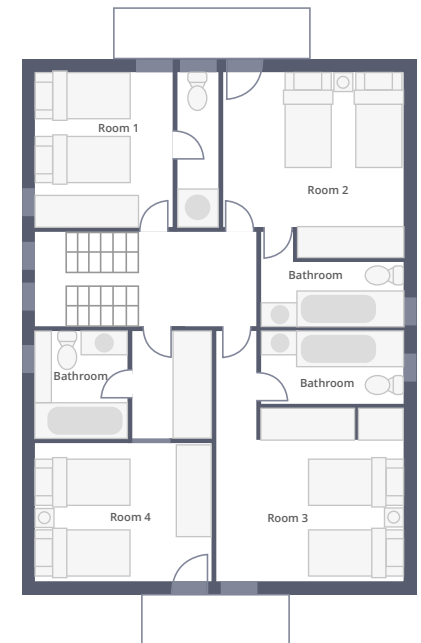
Travel Information

www.skicuisine.co.uk has links to airlines, train services and transport companies. Geneva, Chambéry & Lyon airports are served by the major airlines, contact us for more advice about your transfers to Meribel.

GROUND FLOOR



FIRST FLOOR



MÉRIBEL AT A GLANCE

Méribel at a glance

La Chaudanne is the skiing center of Méribel. From here no less than five lifts take you on your way to the slopes. Locker hire is available at La Chaudanne allowing you to leave your equipment secure when you are ready to leave the slopes.

Méribel center is located next to La Chaudanne offering walking access to the shops, bars and restaurants in the resort. The local free shuttle bus stops at the ice-rink and throughout the resort.

KEY

- | | | | |
|--|---|--|-------------------------------|
| | Méribel Tourist Office, ESF, Carte Neige, SNGF, Coaches, Change, Post Office, Taxis, Reservation, Radio | | Chemist |
| | Indoors paying car park | | Rescue center |
| | Outdoors free car park | | Gendarmerie station |
| | Pay and display outdoor parking | | Police station |
| | Taxis | | Kindergarten |
| | Cash point (ATM) | | Parallel Lines meeting point |
| | Garage | | ESF meeting point |
| | Shuttle stop | | Magic in Motion meeting point |
| | Doctor | | Handicapped access |
| | | | Skipass |
| | | | Stadium |
| | | | Pedestrian itinerary |

