

SORBIER

 SLEEPS 10



AT A GLANCE

- 2 double bedrooms with en-suite shower room
- 2 twin/double bedrooms with en-suite bathrooms (1 with 3rd bed)
- 1 twin room with en-suite shower room
- Satellite TV & DVD + WiFi
- Ipod docking station
- Nespresso machine
- Hairdryer, bathrobes & slippers in each bedroom
- Toiletries provided
- Log fire
- Hot tub + Large sun terrace
- Ski locker and heated boot drier



Large terrace and hot tub with fantastic views

If you are looking for a traditional chalet close to the slopes and Meribel centre then Chalet Sorbier is ideally located. Situated on a peaceful pathway amongst the pine trees you will be able to enjoy a tranquil location for your chalet holiday but have great access to the village which is just across the piste.

You can relax in front of the huge open fire place and enjoy the comfort of your cosy yet stylish sitting room. After a day on the slopes soothe tired legs in the steaming hot tub whilst sipping a well earned aperitif! In addition Chalet Sorbier has a large terrace and is the perfect place to take in the wonderful views across the Meribel valley.

We will assist you with your luggage when you arrive and depart, as access for vehicles is restricted in the winter due to its location across the piste. Public parking is available a short distance away, in Meribel centre.

The slopes are easily accessible from the chalet by walking or skiing along a short path way which joins the main piste at Meribel centre.

CHALET INFORMATION

Our Menus

Your chef & host will ensure you enjoy delicious meals during your stay and will serve you with:

- Cooked & continental breakfast each day, except on their 1 full day off taken on a Wednesday and a Friday morning which is a staff half day off, when they will leave a self-service continental breakfast.
- Afternoon tea with home baked cake or cookies will be available each day.
- On 6 nights you can look forward to pre-dinner canapés served with sparkling wine, beer & soft drinks, followed by a 4 course dinner served with selected wines and finished with fresh coffee and chocolates.
- Special dietary requirements and early children's supper can be catered for, please notify us in advance.

Other Services

Daily Housekeeping, except on Wednesday and Friday. Quality bed linen, large bath towels, bathrobes, hairdryers & toiletries are provided. We are happy to recommend Meribel Nanny Services if you require private child care. If you would like massages or beauty treatments your chalet host can recommend various therapists who will visit the chalet. Remember to book your lift passes, equipment hire and ski school prior to arrival. See www.skicuisine.co.uk for more information.

ON THE SLOPES

Lift Passes

We strongly recommend you pre book lift passes and equipment hire and benefit from free delivery to your chalet. You can pre book online at skipass.skicuisine.co.uk and passes will be delivered to your chalet prior to your arrival.

Ski/Board Schools

www.parallel-lines.com

Tel: UK 0844 8112779

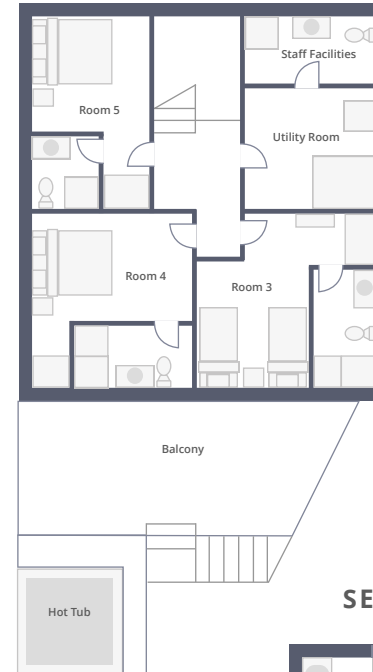
Ski/Board Hire

Ski Cuisine clients can benefit from reduced prices with the following providers when you pre book. www.slidecandy.com
www.meribel-ski-service.com

Travel Information

www.skicuisine.co.uk has links to airlines, train services and transport companies. Geneva, Chambéry & Lyon airports are served by the major airlines, contact us for more advice about your transfers to Meribel.

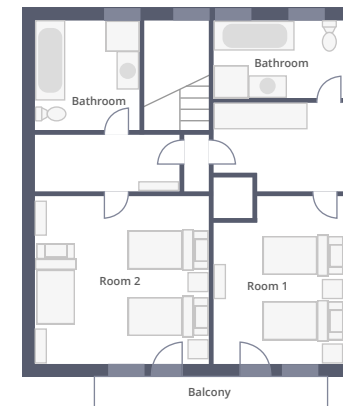
GROUND FLOOR



FIRST FLOOR



SECOND FLOOR



MÉRIBEL AT A GLANCE

Méribel at a glance

La Chaudanne is the skiing center of Méribel. From here no less than five lifts take you on your way to the slopes. Locker hire is available at La Chaudanne allowing you to leave your equipment secure when you are ready to leave the slopes.

Méribel center is located next to La Chaudanne offering walking access to the shops, bars and restaurants in the resort. The local free shuttle bus stops at the ice-rink and throughout the resort.

KEY

- Méribel Tourist Office, ESF, Carte Neige, SNGF, Coaches, Change, Post Office, Taxis, Reservation, Radio
- Indoors paying car park
- Outdoors free car park
- Taxis
- Cash point (ATM)
- Garage
- Shuttle stop
- Doctor
- Chemist
- Rescue center
- Gendarmerie station
- Police station
- Kindergarten
- Parallel Lines meeting point
- ESF meeting point
- Magic in Motion meeting point
- Handicapped access
- Skipass
- Stadium
- Pedestrian itinerary

